

# F<sup>OC</sup>CUS<sup>TM</sup> CCT<sup>TM</sup>

## CLEAR CONNECTION TOOL

*For Fast, Effective Fiber Connector End-Face Cleaning*

- Cleans connections on backplanes and jumpers
- Uses Combination Cleaning<sup>TM</sup> process (CCP<sup>TM</sup>) for first time cleaning, every time
- Effective for the widest range of contaminants
- Easy to use for quick and reliable cleaning
- Rugged and durable, great for all work sites
- Up to 800 cleanings



**CCT-125**

1.25mm for MU and LC connectors



**CCT-250**

2.5mm for FC, SC and ST type connectors



**CCT-MPO**

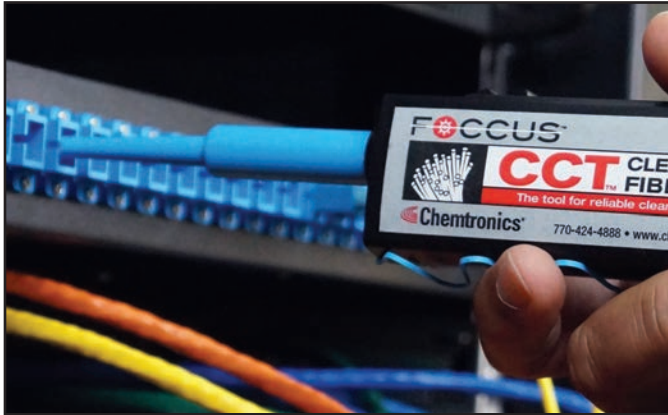
For MPO connectors



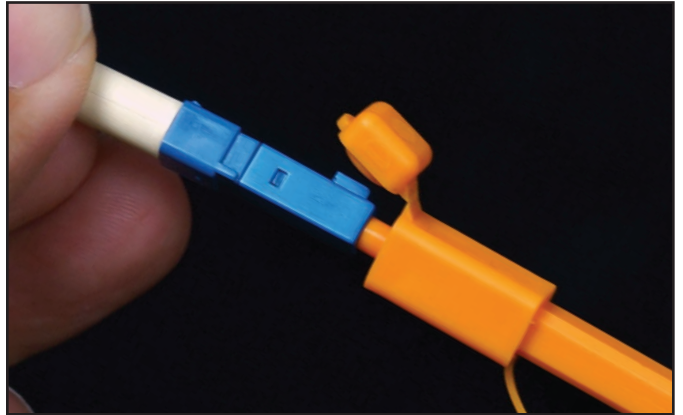
View the Combination Cleaning<sup>TM</sup> Video and see the difference for yourself!

 **Chemtronics<sup>®</sup>**  
*Nothing Performs Like Chemtronics*

# CLEAR CONNECTION TOOL



Remove cap for cleaning adapters and bulkheads



Flip open cap for cleaning connectors

## Fast, Effective Fiber Connector End-Face Cleaning

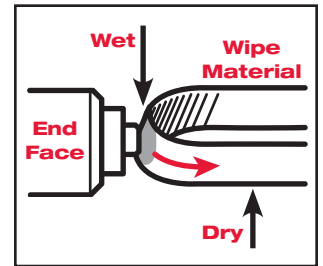
CCT™ Clear Connection Tool used with the FOCCUS™ MX Precision Cleaning Pen provides a fast, simple method of fiber optic cleaning. End faces in bulkheads or on cable assemblies are both effortlessly cleaned the first time . . . every time.

CCT has an easy to use mechanism that advances fabric over a cleaning tip with just a short push and click of the tool. Using the CCT with the FOCCUS MX Precision Cleaning Pen provides for fast, easy and repeatable Combination Cleaning™.

- Cleans connectors on back plane and on jumpers
- Uses Combination Cleaning™ process for first time cleaning, every time
- Effective for the widest range of contaminants
- Easy to use for quick and reliable cleaning
- Rugged and durable, great for all work sites
- Up to 800 cleanings

## Combination Cleaning™ process with CCT Clear Connection Kit

Wet the CCT fabric tip with the MX pen, insert the CCT tip into the connector, and push in the tool 2-3 clicks advancing the fabric from wet-to-dry, perfectly cleaning the end-face. Combination Cleaning™ eliminates all debris and contamination the first time, avoiding expensive rework and truck-rolls from bad connections.



*Combination Cleaning™ is industry proven, exceeding IEC 61300-3-35, IEC TR62627-01, and meeting Telcordia GR-2923-CORE and SAE Aerospace AIR6031.*



**CCT-125 Clear Connection Tool**  
 Cleaning tool for MU and LC connectors

**FW2150 MX Precision Cleaner**  
 Precision cleaner for Combination Cleaning process



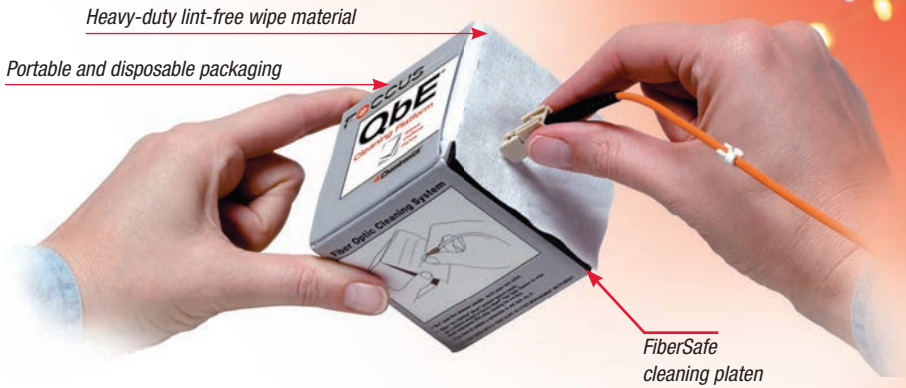
**CCT-250 Clear Connection Tool**  
 Cleaning tool for FC, SC and ST connectors

**FW2150 MX Precision Cleaner**  
 Precision cleaner for Combination Cleaning process



**CCT-MPO Clear Connection Tool**  
 Cleaning tool for MPO connectors

**FW2150 MX Precision Cleaner**  
 Precision cleaner for Combination Cleaning process



## QbE® Cleaning Platforms

Portable and efficient, QbE® Cleaning Platforms offer more complete removal of microscopic contaminants, without the chance of damage to the optical fiber end face. Self-contained cleaning tools that can be used dry or wet, they are convenient and economical for use in field or OEM applications.

- Complete Fiber Optic Cleaning System — no refills to buy or investment in expensive mechanisms to maintain
- Up to 600 cleaning applications using the Combination Cleaning™ process
- Provides the optimum cleaning surface – FiberSafe™ cleaning platen is perfect for outside plant or OEM application
- Heavy duty lint-free wiping material — tough enough to remove buffer-gel and heavy soils, yet soft and compliant for safe end face cleaning
- Patented — U. S Patent Number 6,865,770 and foreign patents



### QbE – Cleaning platform for SC, ST & FC connectors

**QbE** 200 perforated wipes per box  
2.75" x 3" / 7.0 cm x 7.6 cm

### QbE-R – Cleaning platform for SC, APC & MTP recessed connectors

**QbE-R** 200 perforated wipes per box  
2.75" x 3" / 7.0 cm x 7.6 cm

### p-QbE – Portable cleaning platform for SC, ST, FC, MT-type, APC and recessed connectors

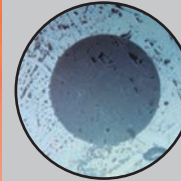
**PQbE** 200 perforated wipes per box  
1.375" x 3" / 3.6 cm x 7.6 cm

### QbE-2 – Portable cleaning platform for LC, SC, FC, MT-type and APC connectors

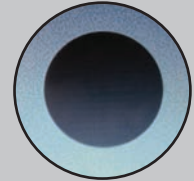
**QbE-2** 200 perforated wipes per box  
1" x 2.5" / 2.54 cm x 6.35 cm

## FOCCUS Combination Cleaning™

Clean first time... Every time!



Connector contaminated with dirt & oils



Connector after FOCCUS™ Combination Cleaning™

FOCCUS products are designed for optimal cleaning of connectors using Combination Cleaning™ process. The end face is passed through a lightly moistened spot on the lint-free wiper, then drawn into the dry area. The large cleaning platform assures the proper angle for UPC and APC connectors.



Effective on common soils:

- Finger oils
- Mineral oils and grease
- Gels & pulling lubricants
- Dust, dirt & carbon
- Water & salt residue & more

Combination Cleaning is industry proven, exceeding IEC 61300-3-35, IEC TR62627-01, and meeting Telcordia GR-2923-CORE and SAE Aerospace AIR6031.

Dry media can smear oils, not fully remove dry particulates, and can create a static field that attracts and holds onto additional debris. Wet cleaning can oversaturate connectors, drawing up contamination from around the ferrule. Without Combination Cleaning, additional cleaning passes, replacement jumpers or connectors may be required.



## CCK4 FirstTime™ Fiber Optic Cleaning Tool Kit

### Features & Benefits:

- Up to 600 applications
- Precision Clean SC/LC, UPC/APC, MT™ Female Connectors

### Contains:

1 QbE-2 Cleaning Platform, 2 MX Precision Cleaning Pens (FW2150)



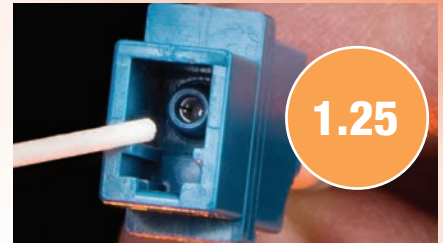
## 1.25mm Fiber Optic Sleeve Cleaning Swab

Ideal tool for cleaning 1.25 mm fiber optic sleeves, back plane connections, and polishing pucks

- Specifically designed to clean all 1.25 mm alignment sleeves, adapters and 1.25 mm back plane connections
- Free of fibers, adhesives, and binders that can generate residue
- Contains no seams or sharp surfaces that can generate particles or cause scratches
- Patented — US Patent 6,795,998 and foreign patents

**25123X** 100 swabs per bag    **25125F** 15 swabs per tube    **26122F** 50 swabs per tube

Swab Length	Handle Width	Head Length	Head Thickness	Head Width	Handle Material	Head Material
6.0" / 15.24 cm	0.08" / 2.0 mm	0.67" / 1.70 cm	0.05" / 1.25 mm	0.05" / 1.25 mm	Polypropylene	Proprietary Polyester



## 2.5 mm Torque-Tube Swab

Knurled grip handle swab for better gripping, cleaning end face and alignment sleeves

- Long, 6" super grip handle; 2.5mm precision swab tool for back plan
- Flexible swab head conforms to connector face
- No adhesives, binders, or fibers to leave residues

**48062F** 50 swabs per tube

Swab Length	Handle Width	Head Length	Head Thickness	Head Width	Handle Material	Head Material
6.0" / 15.2 cm	0.09" / 2.2 mm	0.41" / 10.5 mm	0.10" / 2.5 mm	0.12" / 3.0 mm	Polypropylene	Polyurethane Foam



## MTP Connector Chamois Swab

Ideal chamois swab for MTP cleaning

- Seamless blunt design makes precise contact with MTP end face
- High absorbency swab quickly and safely removes contaminants
- Free of adhesives or binders; will not leave residue
- Patented — U. S. Patent Number 7,526,830 and foreign patents

Swab Length	Handle Width	Head Length	Head Width	Handle Material	Head Material
3.25" / 8.25 cm	0.38" / 9.6 mm	0.88" / 22.3 mm	0.38" / 9.6 mm	ABS	Synthetic Chamois
6" / 15.4 cm	0.38" / 9.6 mm	0.88" / 22.3 mm	0.38" / 9.6 mm	ABS	Synthetic Chamois



Chemtronics offers certification training for the Combination Cleaning process, teaching the right process with the right products.

✓ Call 1-800-645-5244 x 154 to schedule your hands-on training with our technical experts!



[www.chemtronics.com](http://www.chemtronics.com)  
**Chemtronics USA:**  
 8125 Cobb Center Drive, Kennesaw, GA  
 770-424-4888 | 800-645-5244  
[askchemtronics@chemtronics.com](mailto:askchemtronics@chemtronics.com)

**ITW Contamination Control EMEA:**  
 Saffierlaan 5, 2132 VZ Hoofddorp, The Netherlands  
 +31 88 1307 400  
[info@itw-cc.com](mailto:info@itw-cc.com)

